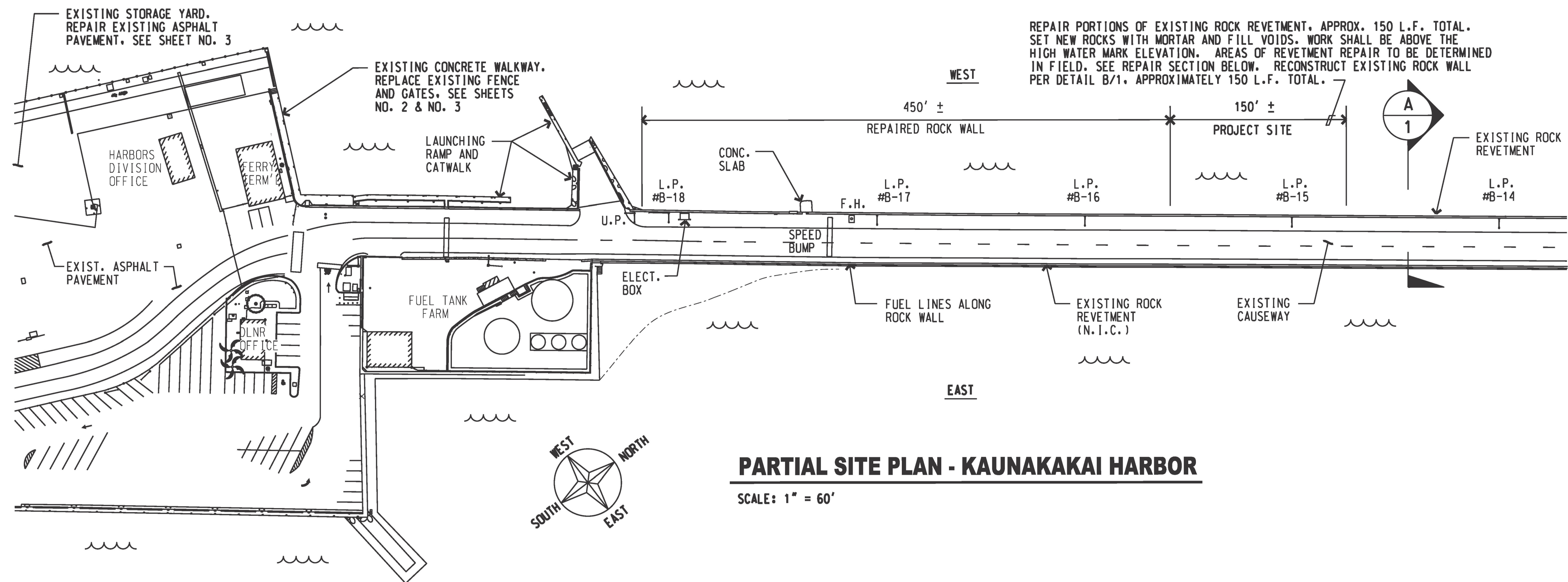
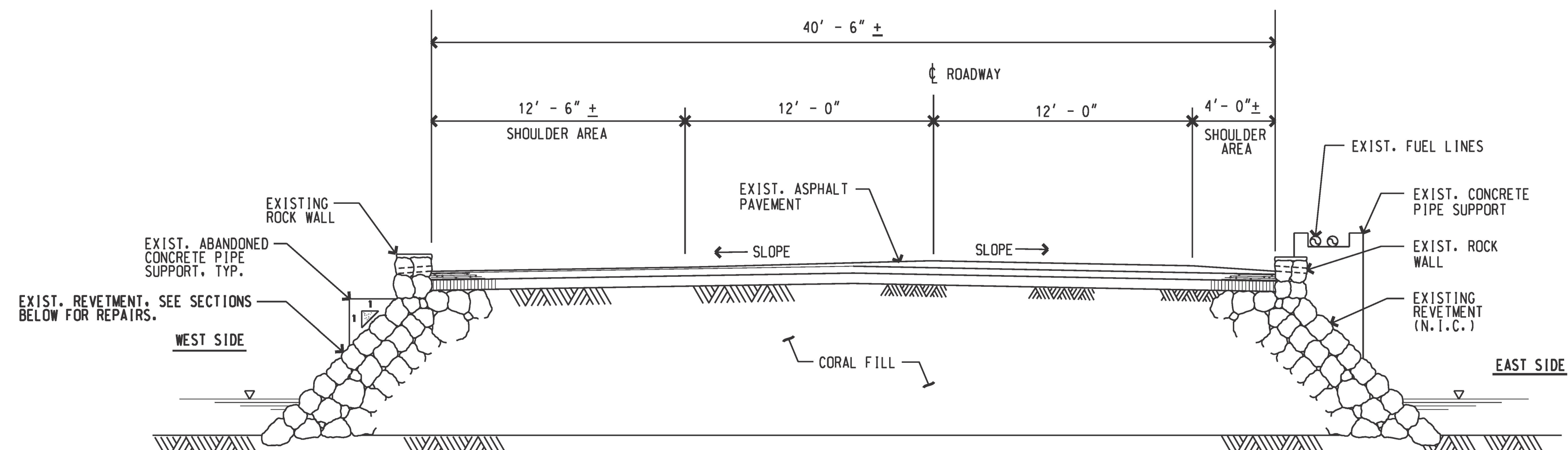


LOCATION MAP - KAUNAKAKAI HARBOR



PARTIAL SITE PLAN - KAUNAKAKAI HARBOR

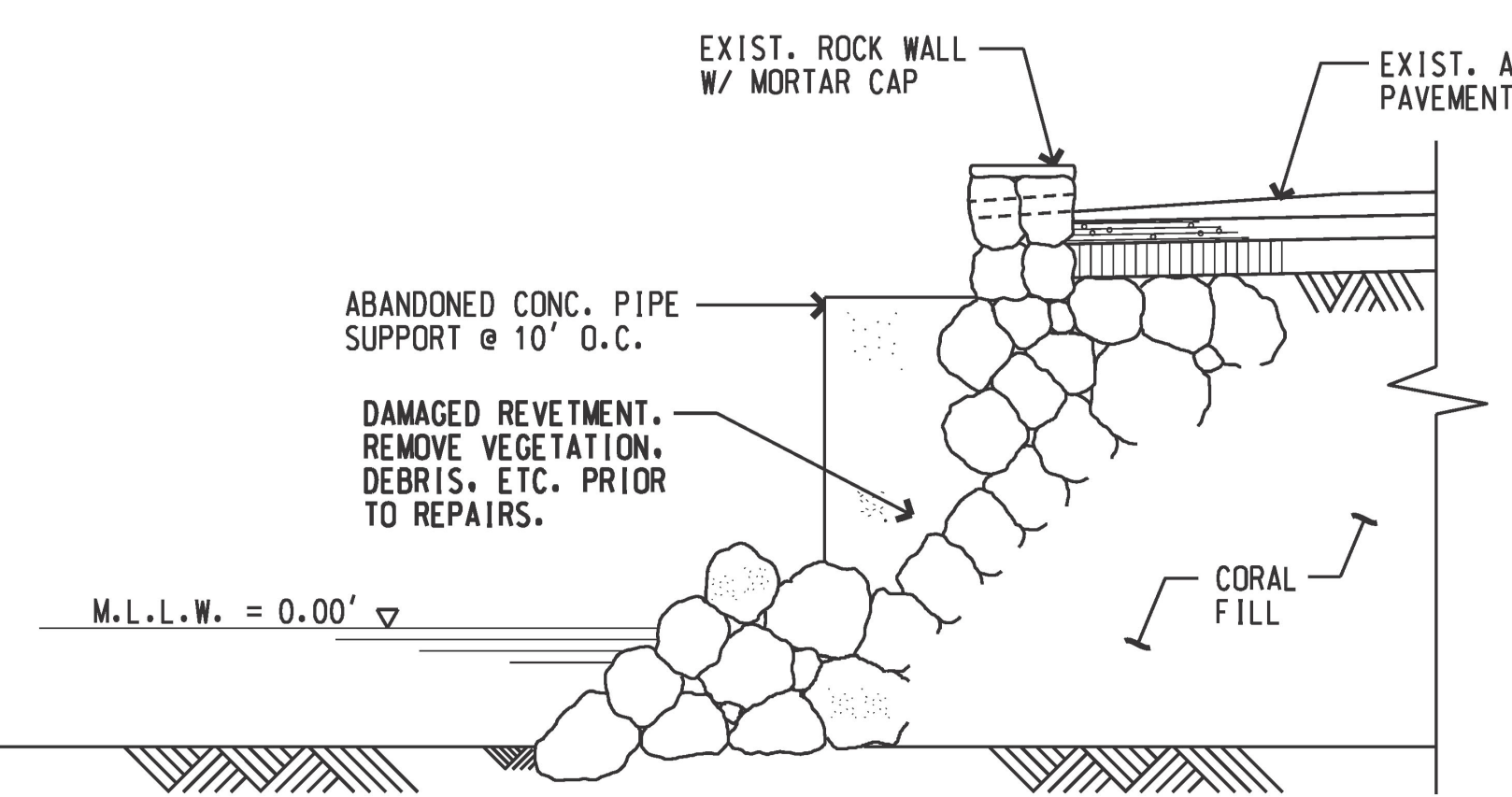
SCALE: 1" = 60'



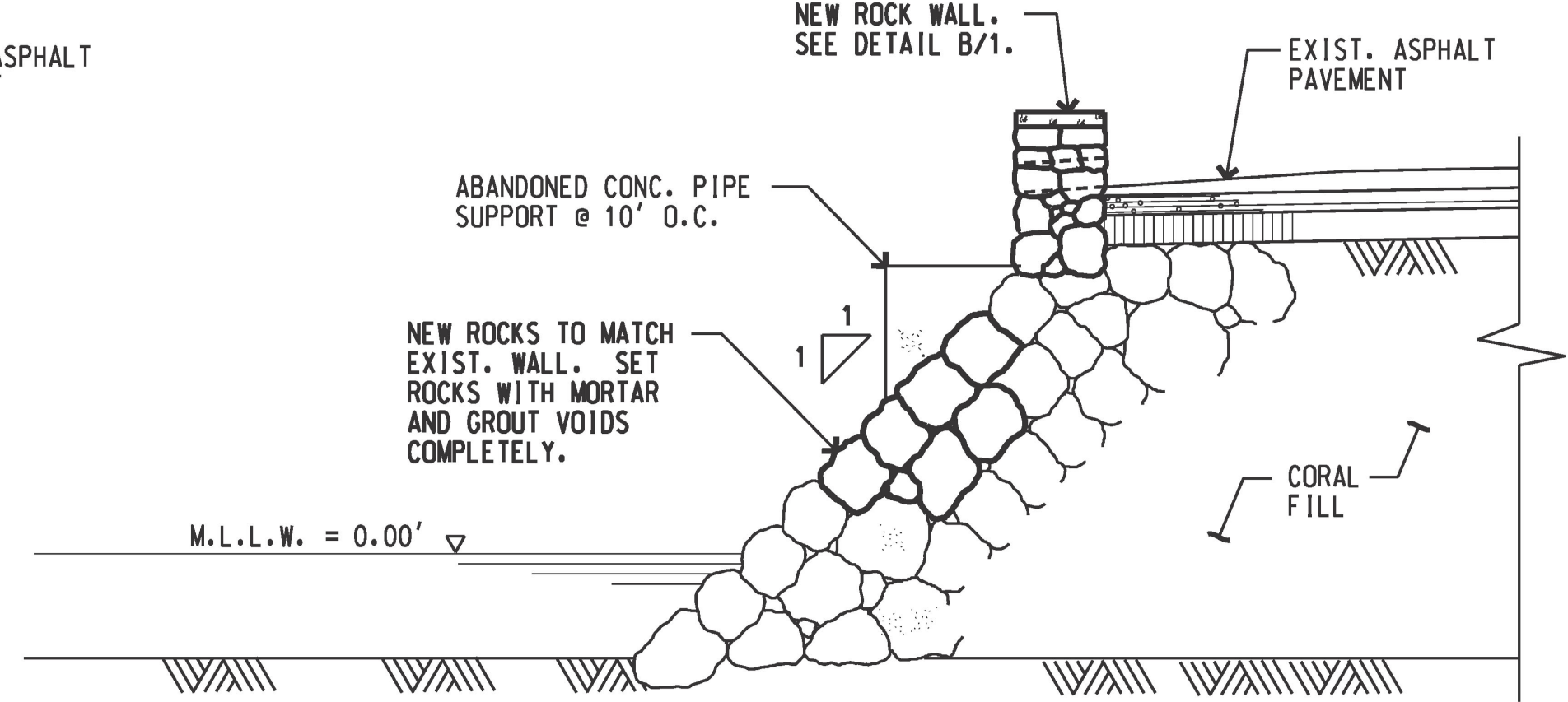
A TYPICAL SECTION THROUGH CAUSEWAY
SCALE: 1/4" = 1' - 0"

- GENERAL NOTES:**
- CONTRACTOR SHALL VERIFY CONDITIONS AND DIMENSIONS IN THE FIELD PRIOR TO ORDERING MATERIALS. CONTRACTOR SHALL EXERCISE CAUTION TO PREVENT DAMAGE TO EXISTING STRUCTURES, UTILITIES AND EQUIPMENT IN THE PROJECT AREA.
 - ALL WORK SHALL BE COORDINATED WITH THE HARBORS DIVISION MAUI DISTRICT MANAGER, THE CONSTRUCTION ENGINEER, AND THE HARBOR AGENT.
 - ALL STRUCTURES AND PORTIONS OF STRUCTURES SHOWN ON THE PLAN ARE EXISTING UNLESS SPECIFICALLY NOTED. EXISTING CONDITIONS SHOWN ARE BASED ON THE BEST AVAILABLE INFORMATION. NO GUARANTEE IS GIVEN THAT THEY ARE MORE THAN APPROXIMATELY CORRECT.
 - THE CONTRACTOR SHALL COMPLY WITH THE CLEAN WATER ACT AND THE STATE HARBORS DIVISION STORMWATER MANAGEMENT PROGRAM. NO POLLUTANTS ARE ALLOWED TO BE DISCHARGED DIRECTLY OR INDIRECTLY THROUGH THE HARBORS SMALL MS4 OR OTHER POTENTIAL PATHWAYS IN TO HARBOR WATERS.
 - THE CONTRACTOR SHALL SUBMIT A SITE-SPECIFIC BEST MANAGEMENT PRACTICE (BMPs) PLAN AND HEALTH & SAFETY PLAN TO HARBORS DIVISION ENGINEERING BRANCH PRIOR TO THE START OF ANY CONSTRUCTION WORK. CLEAR WITH HAWAII ONE CALL CENTER (HCCC) BEFORE EXCAVATION (811) OR (866-423-7287).
 - IN CASE OF HAZARDOUS SUBSTANCE, OIL OR ENCOUNTER OF CONTAMINATED SOIL, CONTRACTOR SHALL NOTIFY THE APPROPRIATE FACILITY PERSONNEL, EMERGENCY RESPONSE AND REGULATORY AGENCIES FOLLOWING NOTIFICATION PROCEDURES, AND SHALL NOTIFY THE HARBORS DIVISION CONSTRUCTION ENGINEER IMMEDIATELY (i.e., WITHIN 24 HOURS); CONTACT INFORMATION MUST BE IN A LOCATION THAT IS READILY ACCESSIBLE AND AVAILABLE. CONTRACTOR SHALL NOTIFY THE HARBORS DIVISION ENGINEERING BRANCH ENVIRONMENTAL HOTLINE (808-587-1962) AND DESIGNATED HARBORS PROJECT ENGINEER OF ANY ILLICIT DISCHARGE AND/OR SPILL/RELEASE THAT OCCURS ONSITE.

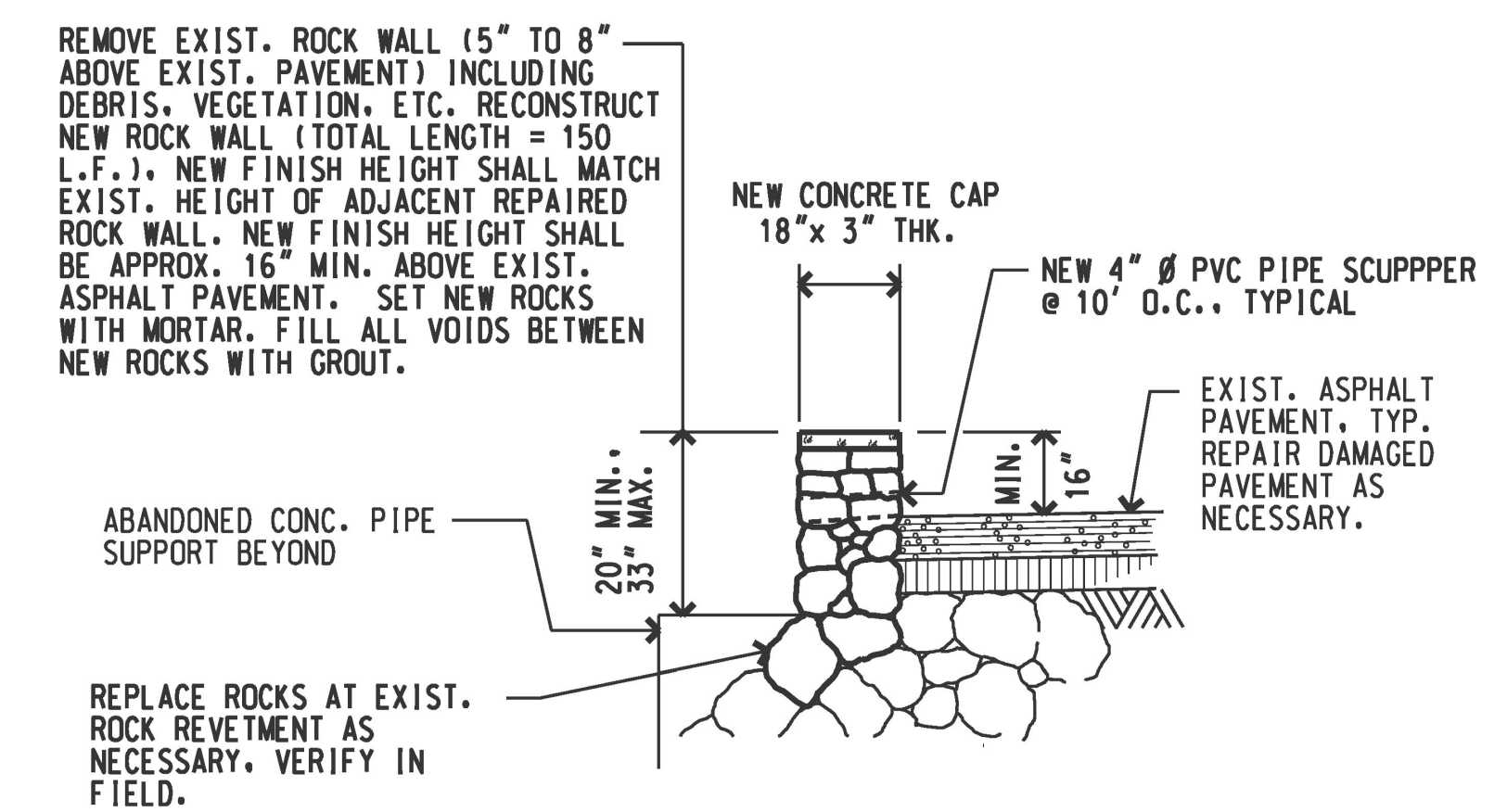
NOTE: REVETMENT REPAIR AREAS SHALL BE DETERMINED IN FIELD BY THE CONSTRUCTION ENGINEER. REPAIRS SHALL REMAIN ABOVE THE HIGH WATER MARK ELEVATION AND SHALL BE APPROXIMATELY 150 L.F. IN TOTAL LENGTH.



TYPICAL EXISTING REVETMENT SECTION (WEST SIDE)
SCALE: 3/8" = 1' - 0"

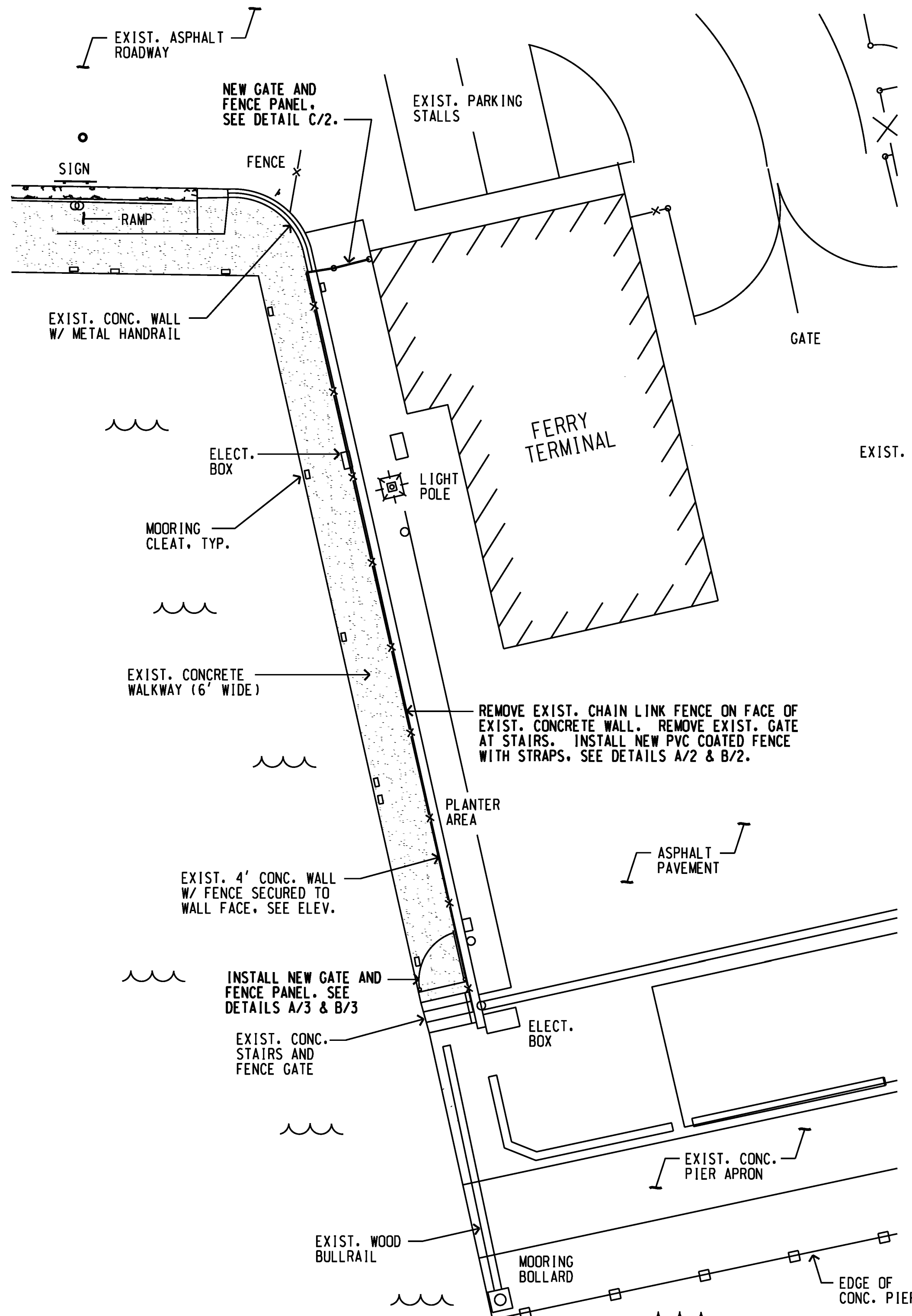


TYPICAL REVETMENT REPAIR SECTION (WEST SIDE)
SCALE: 3/8" = 1' - 0"



B ROCK WALL REPAIR DETAIL
SCALE: 3/8" = 1' - 0"

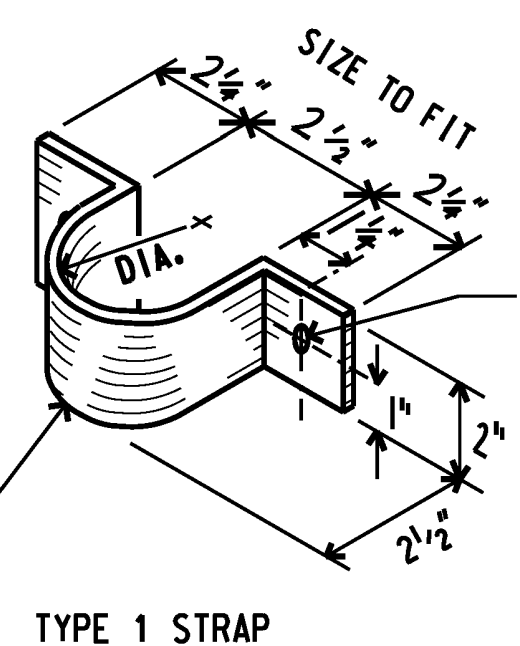
REV	DATE	DESCRIPTION	BY	APPROVED
STATE OF HAWAII DEPARTMENT OF TRANSPORTATION HARBORS DIVISION				
JOB TITLE REPAIRS AT KAUNAKAKAI HARBOR KAUNAKAKAI HARBOR, MOLOKAI, HAWAII				
SHEET TITLE REVETMENT & ROCK WALL REPAIR DETAILS				
SUBMITTED BY: <i>David Johnson</i>		RECOMMENDED BY: <i>[Signature]</i>		
DESIGNED BY: JM		APPROVED BY: <i>[Signature]</i>		
DRAWN BY: JM		FOR HARBORS ADMINISTRATOR		
CHECKED BY: AF		JOB NUMBER		
DATE: DEC. 2022		S 30225		
SCALE: AS SHOWN		1 of 3 SHTS.		



PARTIAL SITE PLAN
SCALE: 1" = 10'

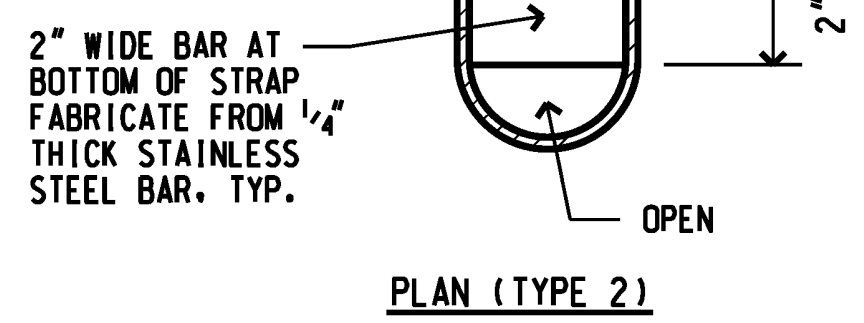
NOTE: TYPE 2 STRAP FOR END POST SHALL BE FABRICATED AS SHOWN BELOW. TYPE 2 STRAP FOR LINE POSTS SHALL HAVE 2 1/2" DIAMETER TO FIT NEW 2 3/8" DIAMETER LINE POST. A BOTTOM BAR SHALL BE ATTACHED TO SECURE NEW FENCE POST IN PLACE AND PREVENT POST FROM DOWNWARD MOVEMENT.

PIPE DIAMETER	STRAP DIAMETER
2 3/8"	2 1/2"
3"	3 1/4"
4"	4 1/4"



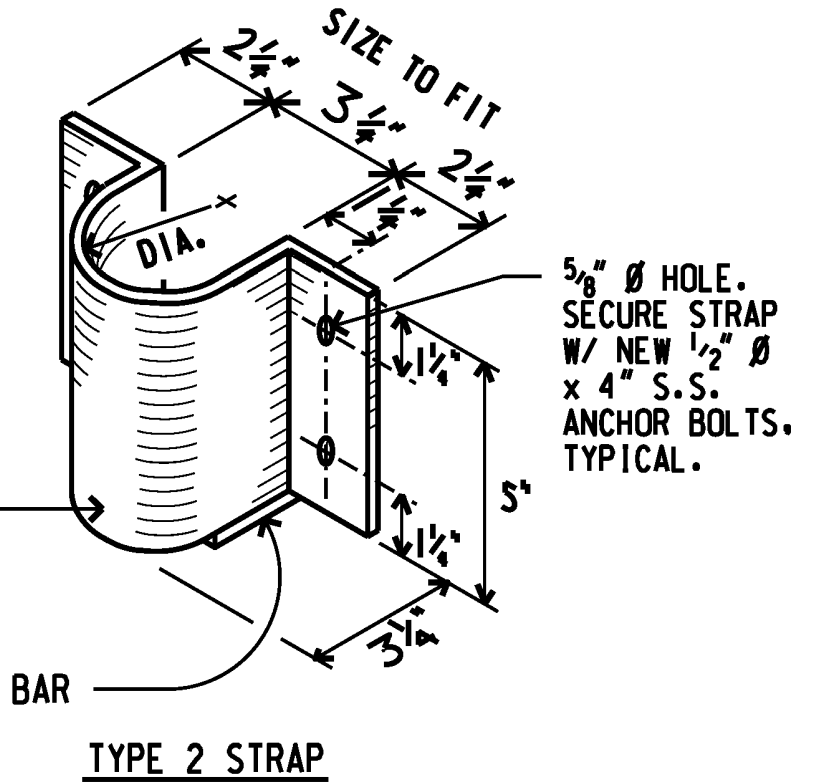
TYPE 1 STRAP

B NEW FENCE POST STRAP DETAILS
NOT TO SCALE



PLAN (TYPE 2)

FABRICATE FROM 1/4" THICK STAINLESS STEEL BAR, TYPICAL

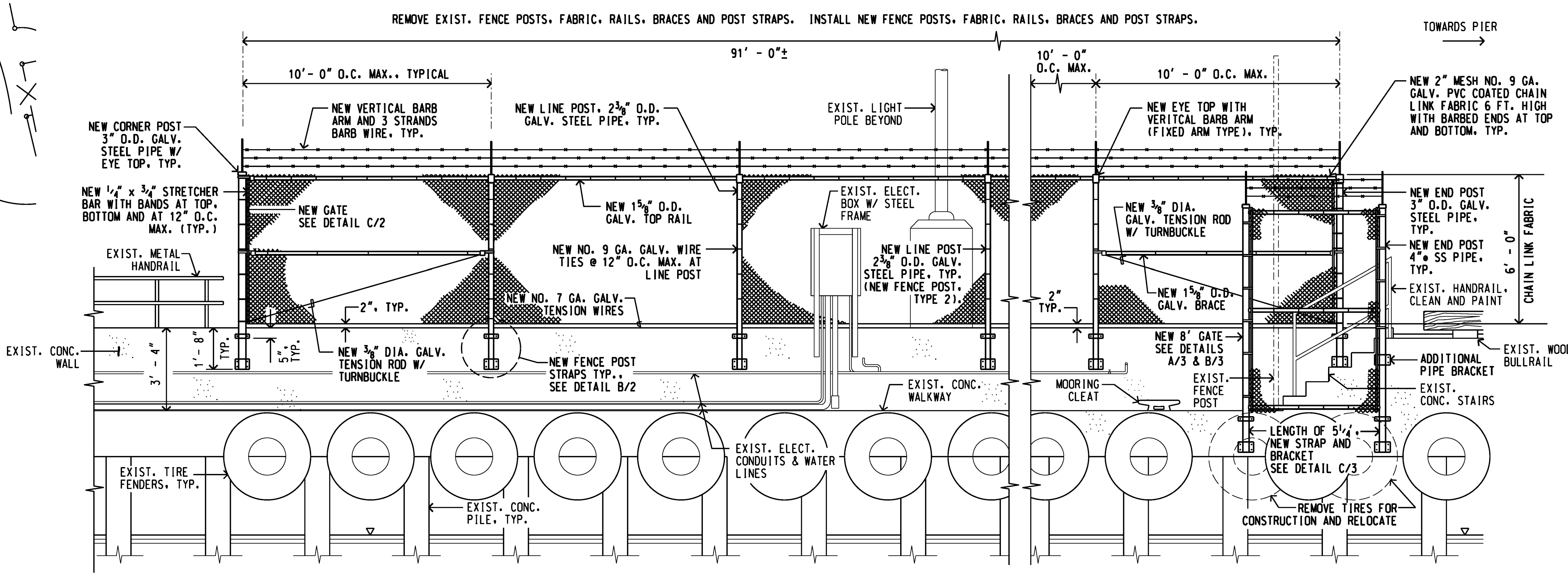


TYPE 2 STRAP

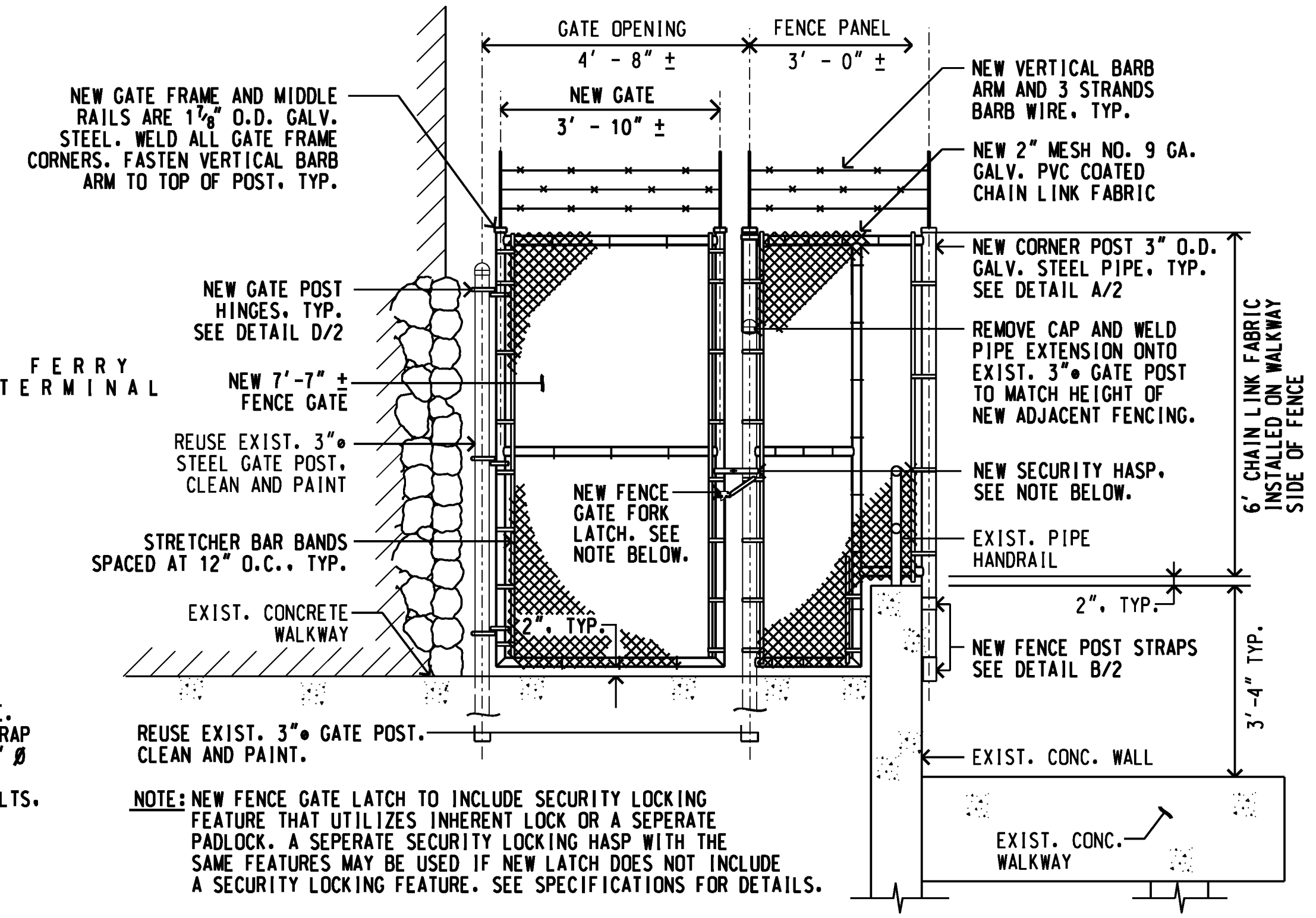
BOTTOM BAR

NOTE: ALL NEW FENCE COMPONENTS INCLUDING POSTS, CHAIN LINK FABRIC, FITTINGS, BARB WIRE, BARB WIRE ARMS, STRETCHER BARS AND BANDS, TENSION WIRE, TIE WIRE, TENSION ROD, ETC. SHALL BE PVC COATED. NEW PVC COATING SHALL BE SEVEN (7) MIL MINIMUM THICKNESS. REMOVE AND REINSTALL EXISTING SIGNS. SEE PROJECT SPECIFICATIONS FOR ADDITIONAL INFORMATION.

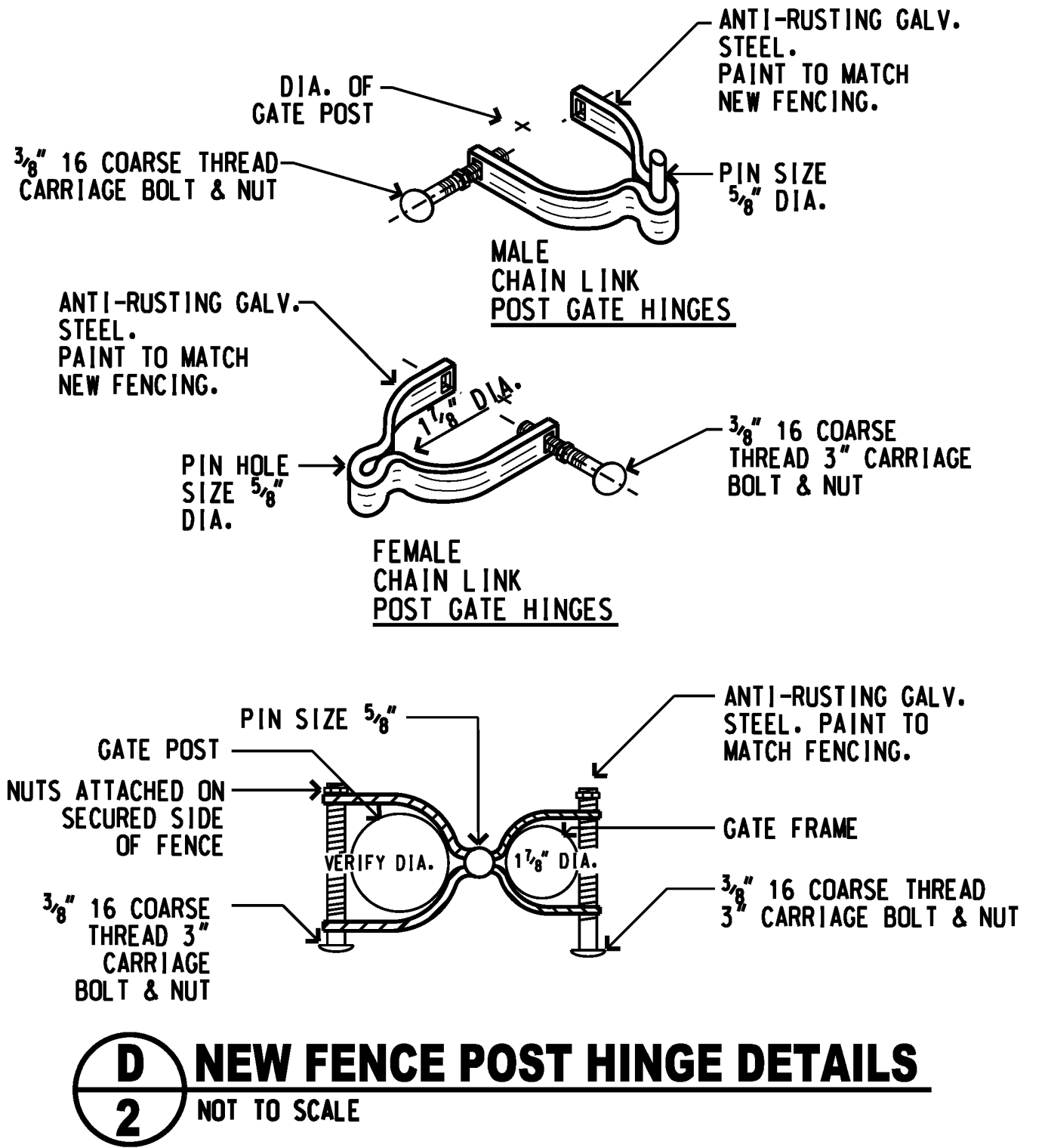
A NEW FENCE AT CONCRETE WALKWAY
SCALE: 3/8" = 1' - 0"



NOTE: CONTRACTOR SHALL REUSE EXISTING GATE POSTS AS SHOWN ON THE DRAWINGS. CONTRACTOR SHALL ADJUST NEW GATE HEIGHT TO MATCH FINISH ELEVATION OF NEW ADJOINING FENCE.

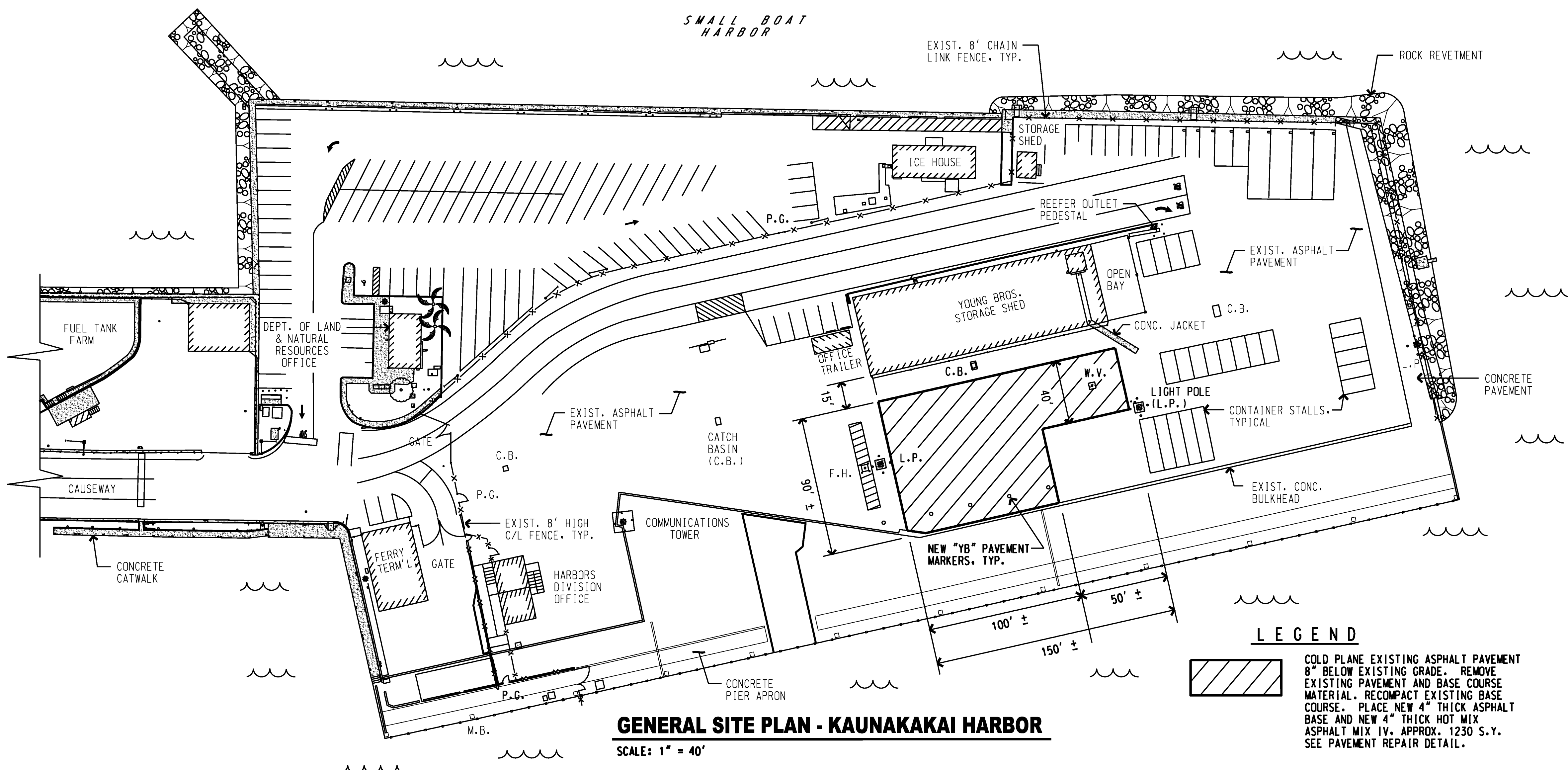


C NEW GATE & FENCE PANEL DETAIL
SCALE: 1/2" = 1' - 0"



D NEW FENCE POST HINGE DETAILS
NOT TO SCALE

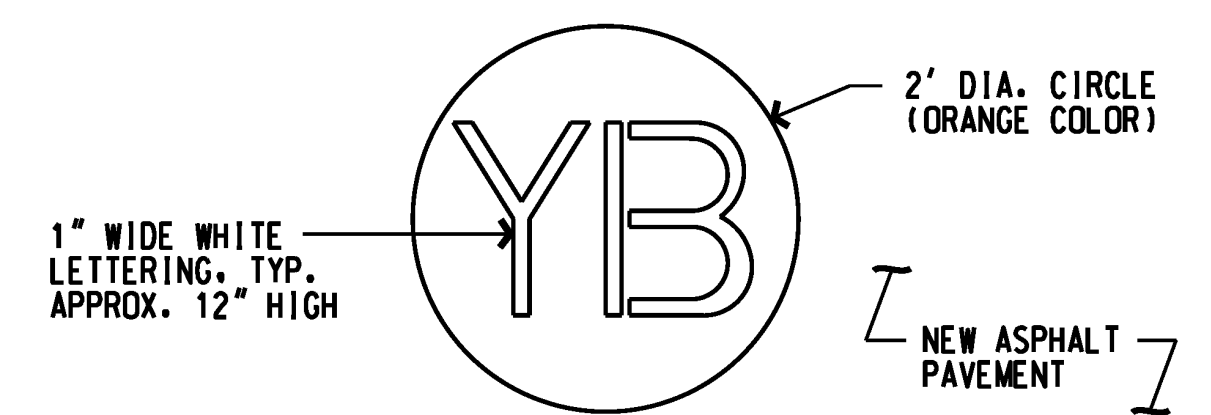
REV	DATE	DESCRIPTION	BY	APPROVED
STATE OF HAWAII DEPARTMENT OF TRANSPORTATION HARBORS DIVISION				
JOB TITLE REPAIRS AT KAUNAKAKAI HARBOR KAUNAKAKAI HARBOR, MOLOKAI, HAWAII				
SHEET TITLE PARTIAL SITE PLAN, NEW FENCE ELEVATION STRAP DETAILS				
SUBMITTED BY: David Johnson		RECOMMENDED BY: [Signature]		
DESIGNED BY: JM		APPROVED BY: [Signature]		
DRAWN BY: JM		FOR HARBORS ADMINISTRATOR		
CHECKED BY: AF		JOB NUMBER		
DATE: DEC. 2022		S 30225		
SCALE: AS SHOWN		2 of 3 SHEETS		



GENERAL SITE PLAN - KAUNAKAKAI HARBOR

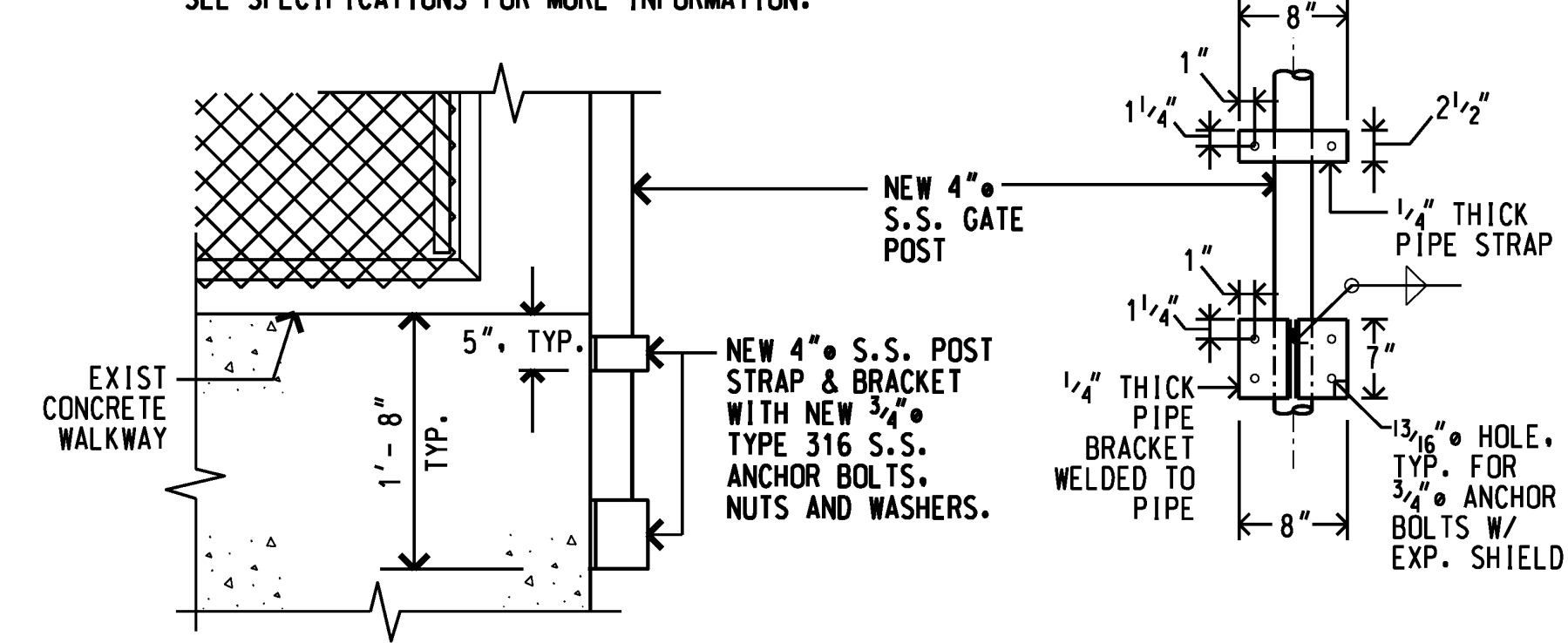
SCALE: 1" = 40'

NOTE: CONTRACTOR SHALL VERIFY IN FIELD THE EXACT DIMENSIONS AND QUANTITY OF NEW "YB" LOGO PAVEMENT MARKERS. MARKERS SHALL BE PLACED APPROX. 25' APART TO MATCH LAYOUT OF EXISTING MARKERS. SEE PROJECT SPECIFICATIONS FOR NEW PAINT MATERIAL INFORMATION.

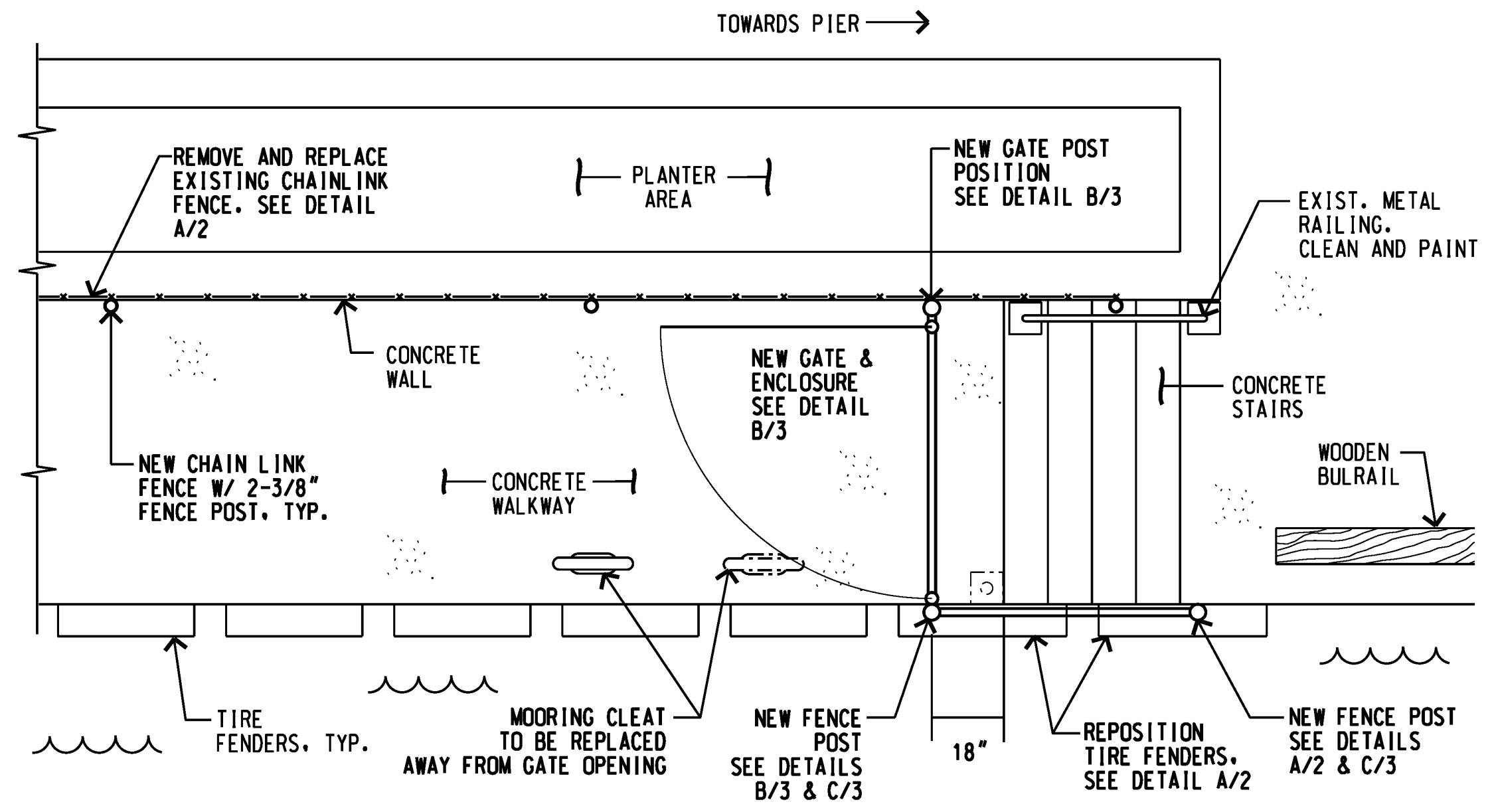


NEW "YB" LOGO PAVEMENT MARKER DETAIL
NOT TO SCALE

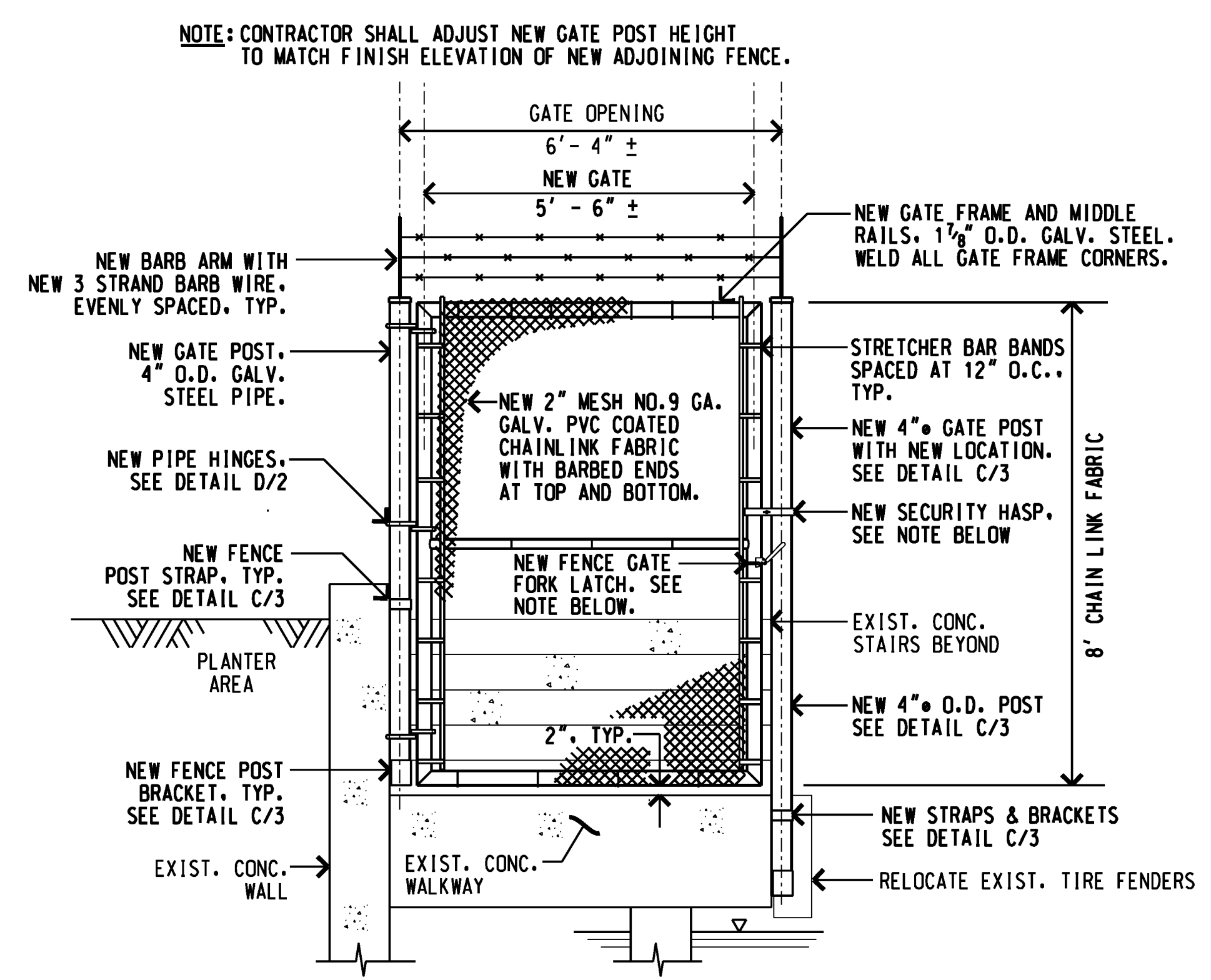
NOTE: BOLTS, WASHERS, NUTS AND ANCHOR BOLTS WITH EXPANSION SHIELD SHALL CONFORM TO ASTM A 307. SEE SPECIFICATIONS FOR MORE INFORMATION.



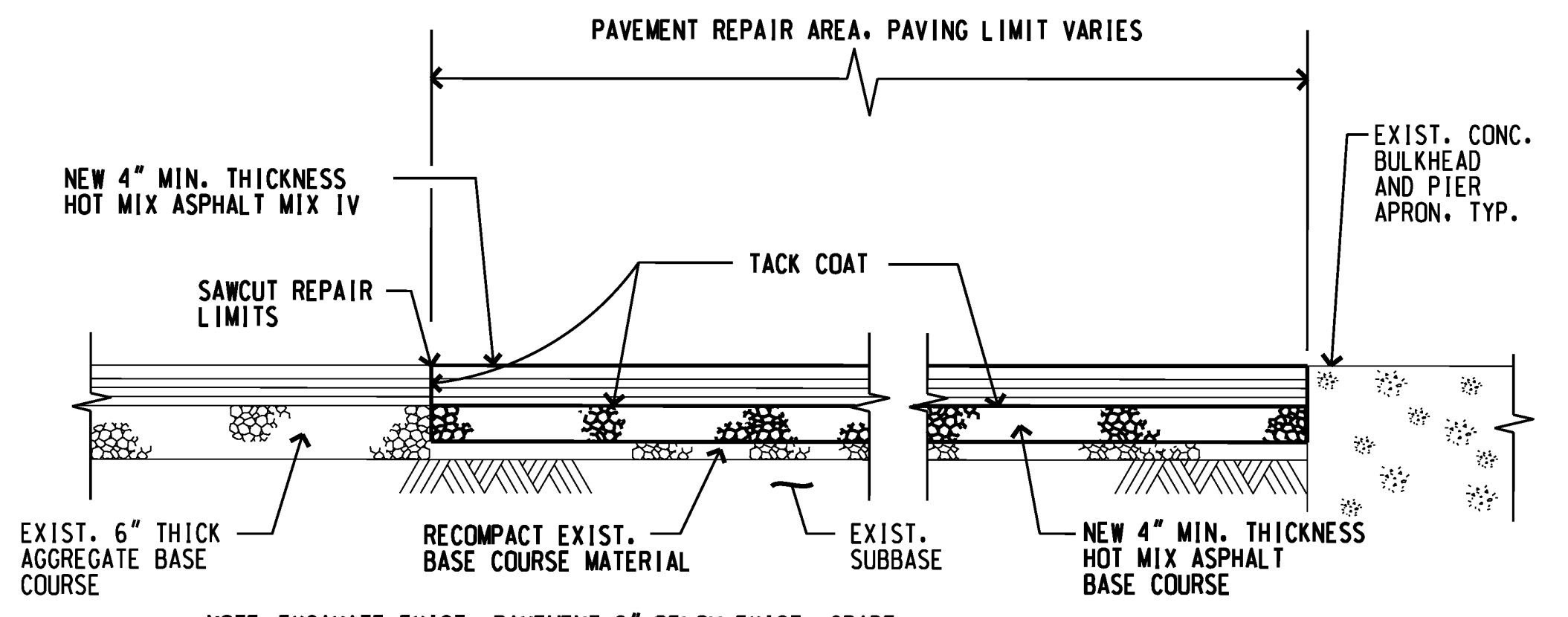
C NEW GATE POST AT WALKWAY
3 NOT TO SCALE



A NEW GATE & ENCLOSURE PLAN
3 SCALE: 3/8" = 1' - 0"



B NEW GATE AT CONC. WALKWAY
3 SCALE: 1/2" = 1' - 0"



PAVEMENT REPAIR DETAIL
SCALE: 3/4" = 1' - 0"

REV	DATE	DESCRIPTION	BY	APPROVED
STATE OF HAWAII DEPARTMENT OF TRANSPORTATION HARBORS DIVISION				
JOB TITLE REPAIRS AT KAUNAKAKAI HARBOR KAUNAKAKAI HARBOR, MOLOKAI, HAWAII				
SHEET TITLE SITE PLAN, PAVEMENT REPAIR & NEW GATE DETAILS				
SUBMITTED BY: <i>David Johnson</i>		RECOMMENDED BY: <i>[Signature]</i>		
DESIGNED BY: JM		APPROVED BY: <i>[Signature]</i>		
DRAWN BY: JM		FOR HARBORS ADMINISTRATOR		
CHECKED BY: AF		JOB NUMBER		
DATE: DEC. 2022		S 30225		
SCALE: AS SHOWN		3 OF 3 SHTS.		